



Monday, June 24, 13



Monday, June 24, 13



Monday, June 24, 13



Monday, June 24, 13

MODEL NO.
E2FD030S06A

SERIAL (S)EMGM447092



FACT. CHARGE 5 LB 12 OZ * TOTAL SYSTEM LB OZ R22
DESIGN PRESSURE: HIGH SIDE 350 PSIG LOW SIDE 180 PSIG
* INSTALLER: MARK PER THE INSTALLATION INSTRUCTIONS.
FOR OUTDOOR USE UNIT SUPPLY 208/230V 1PH 60HZ
MINIMUM CIRCUIT AMPACITY 19.4 AMPS
MAX FUSE OR MAX CKT BKR (HACR TYPE PER NEC) 30 AMPS
COMPRESSOR 208/230 V 1 PH 60 HZ 14.8 RLA 73.0 LRA
FAN MOTOR 208/230 V 1 PH 60 HZ 0.9 FLA 1/8 HP

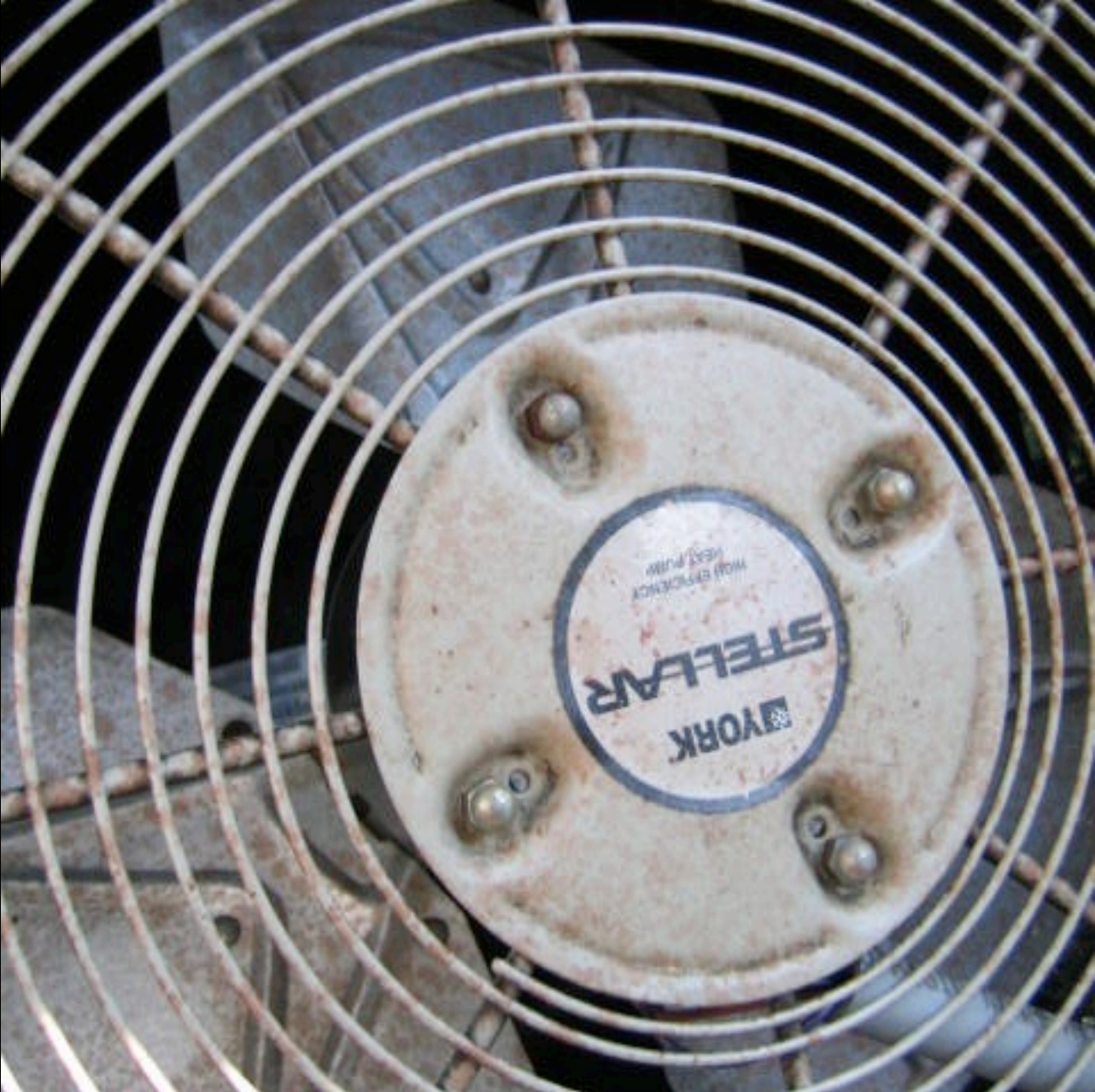
8504 0050



Monday, June 24, 13



Monday, June 24, 13



Monday, June 24, 13



Monday, June 24, 13



Monday, June 24, 13



Monday, June 24, 13



Monday, June 24, 13



Monday, June 24, 13



Monday, June 24, 13



Monday, June 24, 13



Monday, June 24, 13



Monday, June 24, 13



Monday, June 24, 13



Monday, June 24, 13



Monday, June 24, 13



Monday, June 24, 13



Monday, June 24, 13



Monday, June 24, 13



DEFECT

Monday, June 24, 13



Monday, June 24, 13



Monday, June 24, 13



Monday, June 24, 13



Monday, June 24, 13



Monday, June 24, 13



Monday, June 24, 13



Monday, June 24, 13



Monday, June 24, 13



Monday, June 24, 13



Monday, June 24, 13



OSB
RATED WEATHERING
24/16 7/16 INCH
SIZED FOR JOISTING
EXPOSURE 1
352
1-108 IN. 10-1011

Monday, June 24, 13



Monday, June 24, 13



Monday, June 24, 13



Monday, June 24, 13



Monday, June 24, 13



Monday, June 24, 13



Monday, June 24, 13



Monday, June 24, 13



Monday, June 24, 13



Monday, June 24, 13



Monday, June 24, 13



Monday, June 24, 13

The garage shall be separated from the residence and its attic area by not less than ½-inch (12.7 mm) gypsum board applied to the garage side. Garages beneath habitable rooms shall be separated from all habitable rooms above by not less than 5/8-inch (15.9 mm) Type X gypsum board or equivalent.

Check with your local authority.



Monday, June 24, 13

A photograph of a ceiling under renovation. The ceiling is a light beige color with several large, irregular patches of white paint or plaster applied to it. A square wooden frame is visible, containing a dark brown, textured material. A long, silver fluorescent light fixture is suspended from the ceiling by a chain. The overall scene suggests a construction or renovation project with significant work remaining.

DEFECT

Monday, June 24, 13



Monday, June 24, 13



Monday, June 24, 13



Monday, June 24, 13



DEFECT



Monday, June 24, 13



Monday, June 24, 13



Monday, June 24, 13



Monday, June 24, 13

A photograph of a white computer mouse on a wooden surface. The mouse is positioned in the center-right of the frame. The wooden surface is partially covered with white, brush-stroke-like paint or a similar substance, creating a pattern of horizontal and vertical lines. The mouse has a small purple logo on its top. A white cord is attached to the mouse and extends towards the bottom right corner. The overall lighting is somewhat dim, and the image has a slightly grainy texture.

DEFECT



Monday, June 24, 13



Monday, June 24, 13



Monday, June 24, 13

Other openings between the garage and the residence shall be equipped with solid wood doors not less than 1-3/8" (35 mm) in thickness, solid- or honeycomb-core steel doors not less than 1-3/8" (35 mm) thick, or 20-minute fire-rated doors.

Check with your local authority.



Monday, June 24, 13



Monday, June 24, 13



Monday, June 24, 13



Monday, June 24, 13



Monday, June 24, 13



Monday, June 24, 13



Monday, June 24, 13



Monday, June 24, 13

- the service drop;
- the overhead service conductors and attachment point;
- the service head, gooseneck and drip loops;
- the service mast, service conduit and raceway;
- the electric meter and base;
- service-entrance conductors;
- the main service disconnect;
- panelboards and over-current protection devices (circuit breakers and fuses);
- service grounding and bonding;
- a representative number of switches, lighting fixtures and receptacles, including receptacles observed and deemed to be arc-fault circuit interrupter (AFCI)-protected using the AFCI test button, where possible;
- all ground-fault circuit interrupter receptacles and circuit breakers observed and deemed to be GFCIs using a GFCI tester, where possible; and
- smoke and carbon-monoxide detectors



Monday, June 24, 13



Monday, June 24, 13

EVERETT ELECTRIC COMPANY SYSTEM

IMPORTANT

Do not touch or move any electrical parts, wires, or cables unless you are a qualified electrician. Failure to do so may result in death or serious injury.

DANGER

High Voltage - 2000V
 Electric Shock - Fatal
 Electric Arc - Fatal

Do not touch or move any electrical parts, wires, or cables unless you are a qualified electrician. Failure to do so may result in death or serious injury.



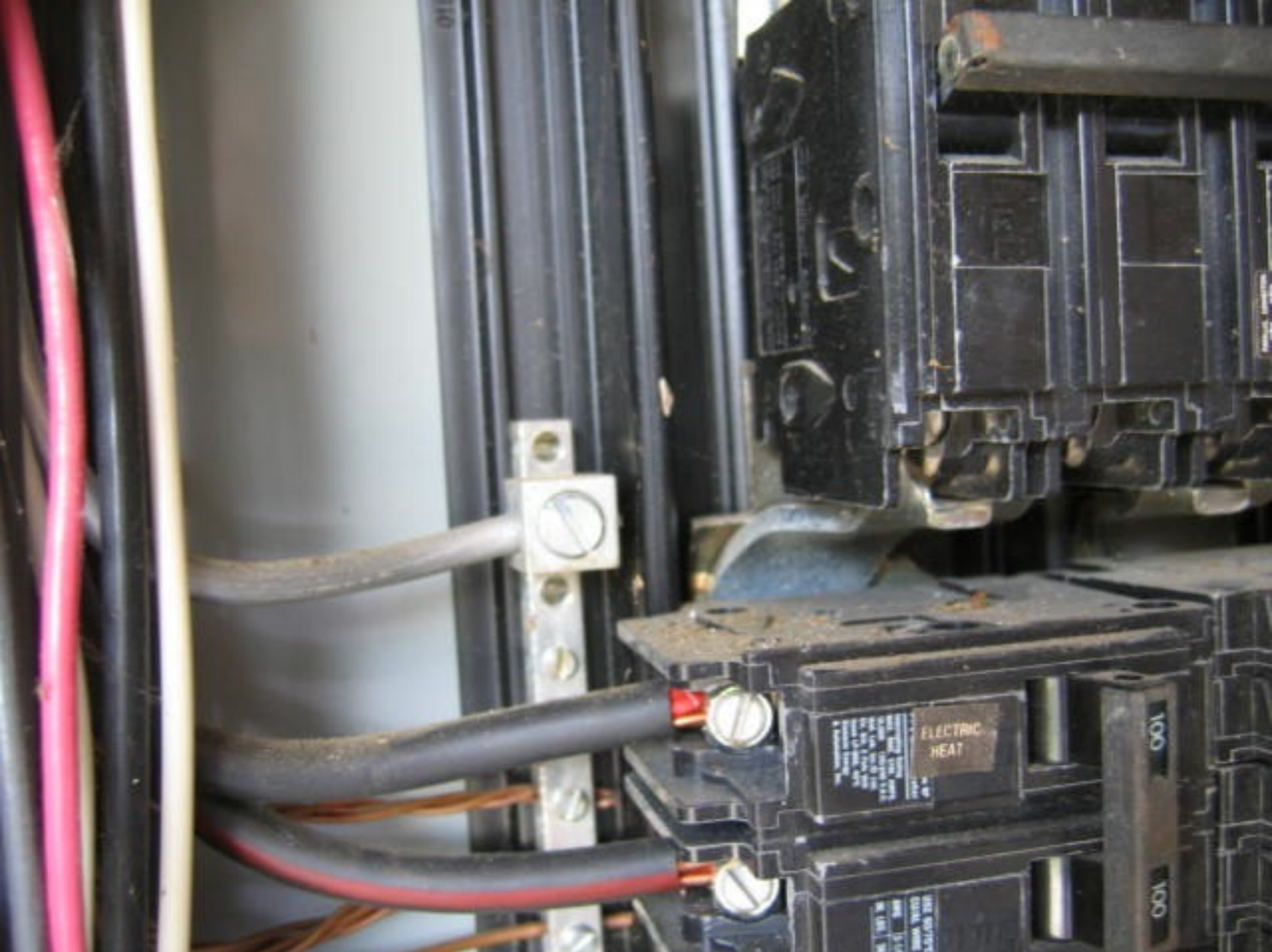
Monday, June 24, 13



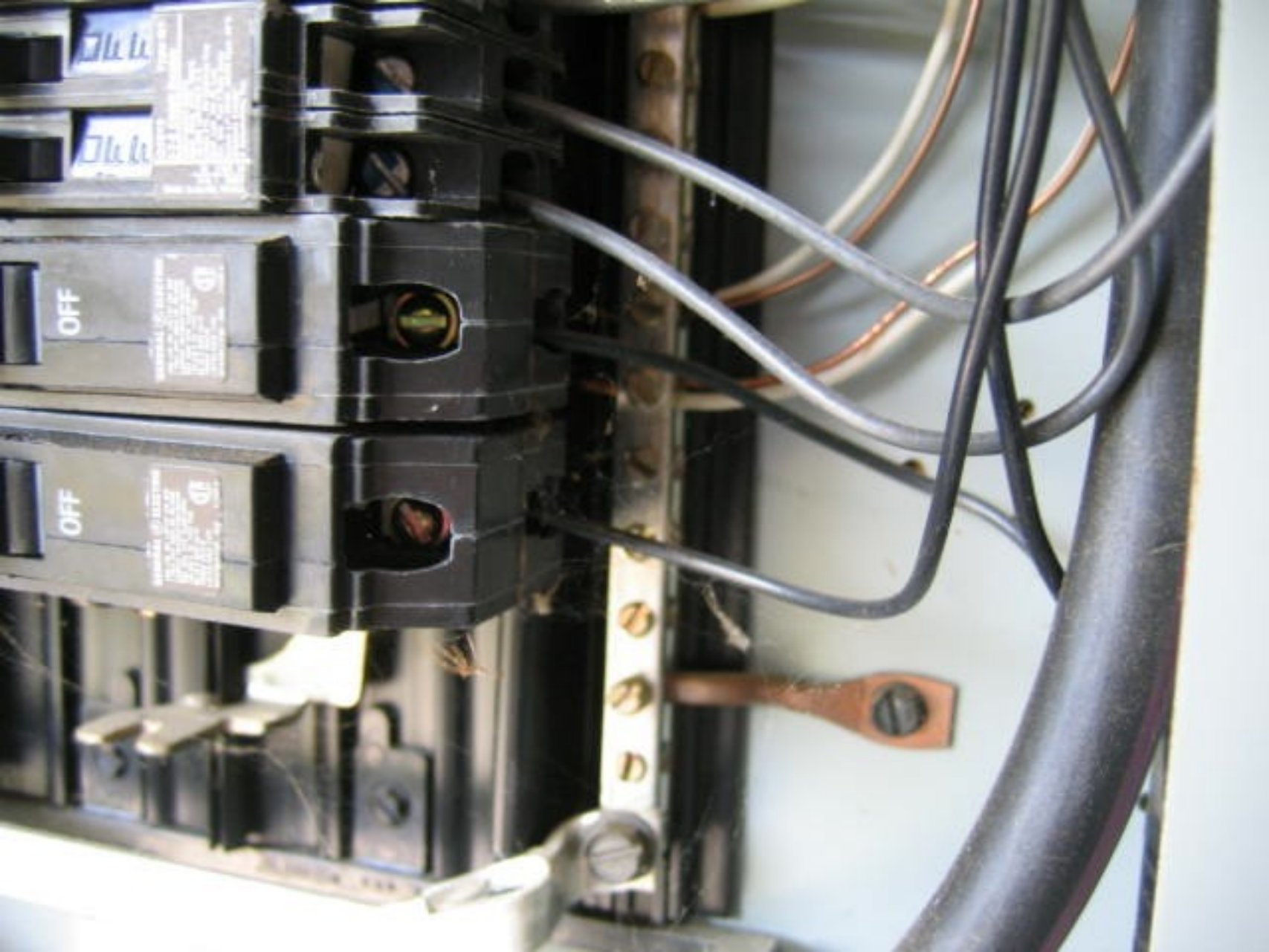
Monday, June 24, 13



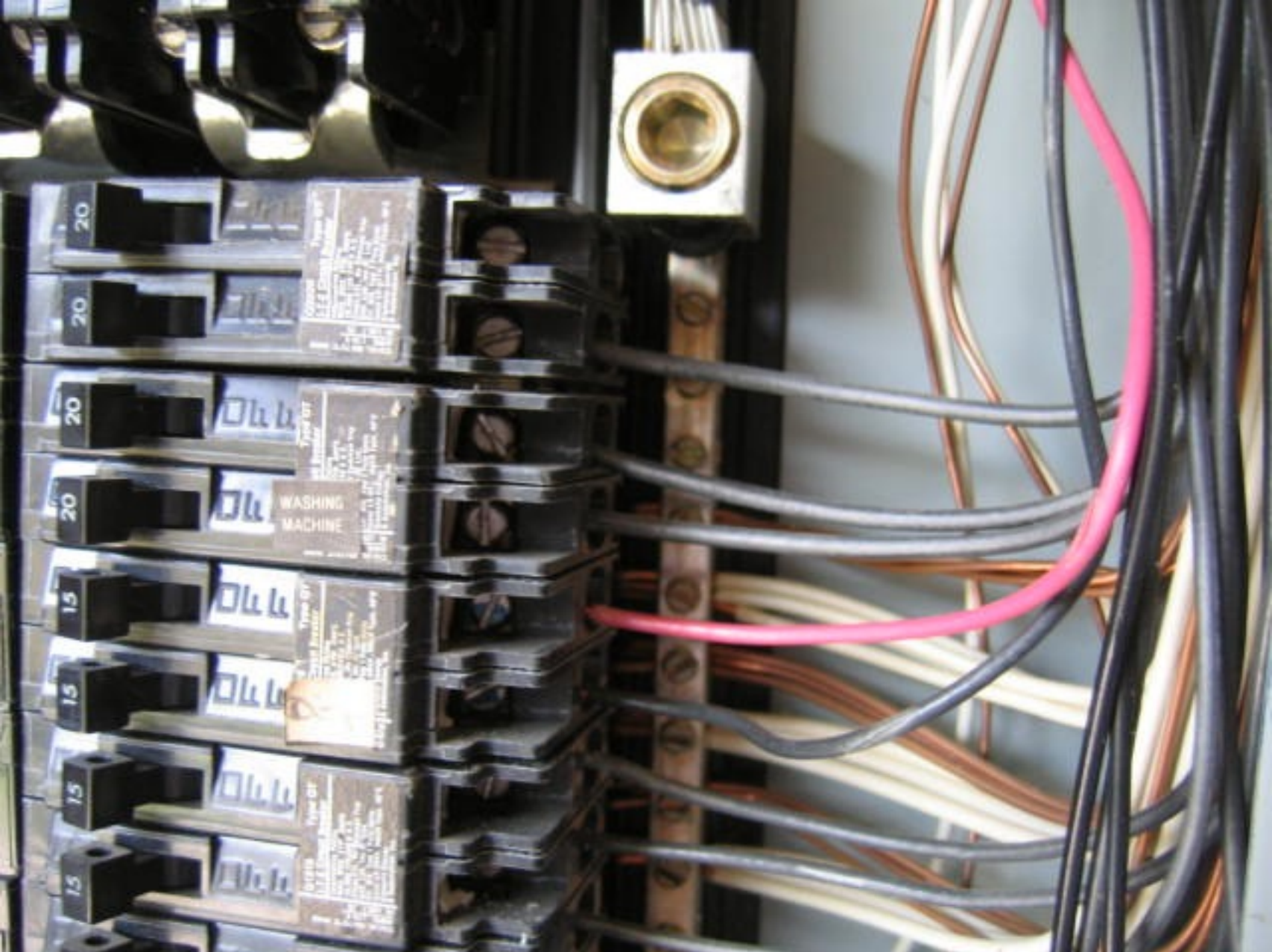
Monday, June 24, 13



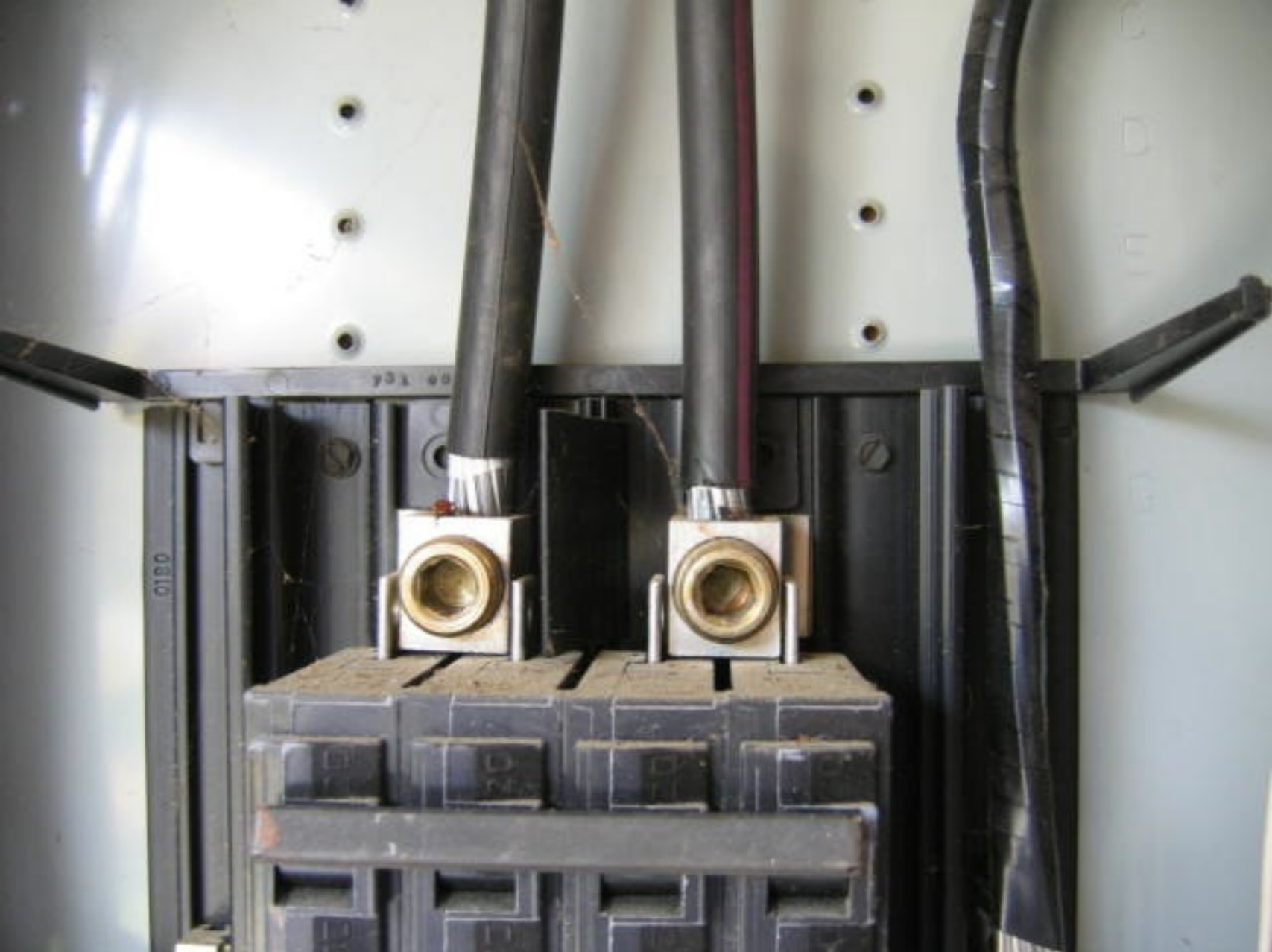
Monday, June 24, 13



Monday, June 24, 13



Monday, June 24, 13



Monday, June 24, 13



Monday, June 24, 13



Monday, June 24, 13



Monday, June 24, 13



Monday, June 24, 13



Monday, June 24, 13

A close-up photograph of a person's hand pointing to a dark, irregular smudge on a window screen. The smudge is located on the index finger. The background shows a blurred outdoor scene with greenery and a building. The text 'COSMETIC DEFECT' is overlaid in large white letters.

COSMETIC DEFECT

Monday, June 24, 13



Monday, June 24, 13



Monday, June 24, 13



Monday, June 24, 13



Monday, June 24, 13



Monday, June 24, 13



Monday, June 24, 13



Monday, June 24, 13



Monday, June 24, 13



Monday, June 24, 13



Monday, June 24, 13



Monday, June 24, 13

DEFECT



Monday, June 24, 13



Monday, June 24, 13

A photograph of a white front-loading washing machine in a laundry room. A white laundry basket filled with colorful clothes is on top of the machine. The word "DEFECT" is overlaid in large, bold, white capital letters across the center of the machine. To the left, a portion of a white sink with a chrome faucet is visible. To the right, a white cabinet door is partially seen. The floor is made of grey tiles.

DEFECT

Monday, June 24, 13



Monday, June 24, 13



Monday, June 24, 13



Monday, June 24, 13



Monday, June 24, 13



Monday, June 24, 13



Monday, June 24, 13



Monday, June 24, 13



Monday, June 24, 13



Monday, June 24, 13



Monday, June 24, 13



Monday, June 24, 13



Monday, June 24, 13



Monday, June 24, 13



Monday, June 24, 13



Monday, June 24, 13



Monday, June 24, 13



Monday, June 24, 13



Monday, June 24, 13



DEFECT



Monday, June 24, 13



Monday, June 24, 13



Monday, June 24, 13



Monday, June 24, 13



Monday, June 24, 13



Monday, June 24, 13



DEFECT



Monday, June 24, 13



Monday, June 24, 13



Monday, June 24, 13



Monday, June 24, 13



DEFECT



Monday, June 24, 13



Monday, June 24, 13



Monday, June 24, 13



Monday, June 24, 13



Monday, June 24, 13



Monday, June 24, 13



Monday, June 24, 13



Monday, June 24, 13



Monday, June 24, 13



Monday, June 24, 13



Monday, June 24, 13



Monday, June 24, 13



Monday, June 24, 13



Monday, June 24, 13



Monday, June 24, 13



Monday, June 24, 13