



PEACH
Inspections

917-1096

Full Home Inspections

Termite	Mold
Lead	Water
Stucco	Radon





For Sale
Equal Housing Opportunity
Theresa Simpson
353-8844
Professional Realty, Inc.

















8:15 AM:

Done with the exterior.

8:15 - 9:15 AM:

Inspect the HVAC, hot water source, water supply, DWV, plumbing

HVAC





YORK

PRESCRIPTION DIET

Wid
Canine

YORK

Technical specifications and data sheet for a YORK HVAC unit, including model number, capacity, and performance metrics.

Warning label with safety instructions, likely regarding electrical safety or refrigerant handling.

Small identification label at the bottom center of the panel.

FOR CANADIAN INSTALLATIONS
CAUTION: DO NOT REMOVE THE LINE
OR DISCONNECT THE SYSTEM
ATTENTION: NE PAS ENLEVER LA LIGNE
NI DÉCONNECTER LE SYSTÈME
DE RÉCHAUFFEMENT DE L'EAU
CHAUDE À L'EAU CHAUDE

MODEL EQUIPPED WITH JET
ORBITAL
PARTS & SERVICE

CAUTION
DO NOT REMOVE THE LINE
OR DISCONNECT THE SYSTEM
NE PAS ENLEVER LA LIGNE
NI DÉCONNECTER LE SYSTÈME
DE RÉCHAUFFEMENT DE L'EAU
CHAUDE À L'EAU CHAUDE



... INSTALL.
... HT. WAS TESTED 0.50
... USE ONLY 208/240V SUPPLY CIRCUIT
... TO GND (NOM). SEE INSTALLATION INSTRUCTIONS.

... CLEARANCE FROM COMBUSTIBLE SURFACE IS 0. DUCT OR
... CLEARANCE FROM COMBUSTIBLE SURFACE IS 1 INCH UP
... FROM UNIT.

... MAX TEMPS. INLET 120 DEG. F./OUTLET 200 DEG. F.

063-94237-000
REV C MFD0491

POST OFFICE
BOX 1592

YORK
PENNSYLVANIA
17405-1592

035-08265D REV B URC

... ENTAL

... CANADIAN INSTALLATIONS







RECEIVED
MAY 2012
SERIAL
1881 P/A 001 2012-012

CAUTION
DO NOT OPERATE THIS EQUIPMENT
UNLESS YOU ARE TRAINED AND
CERTIFIED TO DO SO. CONTACT
THE MANUFACTURER FOR
MAY 2012

CAUTION
DO NOT OPERATE THIS EQUIPMENT
UNLESS YOU ARE TRAINED AND
CERTIFIED TO DO SO. CONTACT
THE MANUFACTURER FOR
MAY 2012

RECEIVED
MAY 2012
SERIAL
1881 P/A 001 2012-012

RECEIVED
MAY 2012
SERIAL
1881 P/A 001 2012-012







SHEETROCK

All Purpose
Joint Compound

Label on the wall with technical specifications and safety information.

Label on the electrical device with technical specifications and safety information.





WARNING: This outlet is not to be used for high-voltage applications. The high-voltage insulation is not designed for high-voltage applications. The high-voltage insulation is not designed for high-voltage applications. The high-voltage insulation is not designed for high-voltage applications.

WARNING: This outlet is not to be used for high-voltage applications. The high-voltage insulation is not designed for high-voltage applications. The high-voltage insulation is not designed for high-voltage applications. The high-voltage insulation is not designed for high-voltage applications.



Agilent



Agilent
SERIAL NUMBER / DATE

Model: 1000-100-0000
Serial: 100-100-0000
Date: 10/10/00

1. Do not use this instrument in a hazardous environment.
2. Do not use this instrument in a flammable or explosive atmosphere.
3. Do not use this instrument in a corrosive atmosphere.
4. Do not use this instrument in a high humidity atmosphere.
5. Do not use this instrument in a high temperature atmosphere.

Agilent Technologies, Inc.
3000 Central Expressway
Santa Clara, CA 95051
Tel: 408-755-1300
Fax: 408-755-1301
www.agilent.com





SUMMER

OFF

OFF







HUMIDITY

Apollinaire

25 5 OFF

TEMPERATURE

01	112
01	122
01	115
02	115
02	115
03	136

A/C INSP.
CHG. RP 12

10/2/04	134 HT + Hum ✓
9-14-05	147 PTU COOL RP 12 Hum
5-22-06	147/169 PTU C. RP 12
11-30-06	170 HEAT PTU SIT Hum
04/11/07	170 Cool PTU RP 12 + Hum



YOBK

POWER TWIST
100% COTTON







The background features abstract, flowing shapes in shades of blue and grey, creating a sense of movement and depth. The shapes are layered and curved, resembling stylized waves or organic forms.

hot water source



Hydrojet TOTAL PERFORMANCE SYSTEM
Improved Performance Safety
Lower Operating Costs
More Hot Water

BRADFORD WHITE
F.H.C.



⚠ DANGER
HOT SURFACE
HOT WATER
PRESSURE

DANGER



AUTOMATIC STORAGE WATER HEATER

BRADFORD WHITE CORPORATION
200 LAFAYETTE ST. MIDDLEVILLE
Model No: M180R6DS13

Serial No: XD4098947 Dash No:
Cap. 80.0 (Gal.) / 302.8 (Liters)

Voltage: 240 AC ONLY

Upper Element: 4500 Watts

Lower Element: 4500 Watts

Maximum : 4500 Watts

Pressure Test 300 (Psi), Working
Wattage rating based on 60 HZ







2018 IPC International Plumbing Code 504.6 Requirements for discharge piping.

**[https://codes.iccsafe.org/public/
collections/I-Codes](https://codes.iccsafe.org/public/collections/I-Codes)**





Temperature over 125°F
Severe burns
Death from scalds.
Disabled and elderly
at risk of being

Read manual before
use at water

bathing or

200 LAFAYETTE ST. MIDDLEVILLE MI 49347
Model No: M180R6DS13
Serial No: XD4098947 Dash No: -131-77

Cap. 80.0 (Gal.) / 302.8 (Liters)
Voltage: 240 AC ONLY 50/60 Hz
Upper Element: 4500 Watts
Lower Element: 4500 Watts
Maximum : 4500 Watts

Press: Test 300 (Psi), Working 150 (Psi)
Wattage rating based on 60 HZ

INSTALLED:
5/26/01



602B

water supply





Blue label with illegible text, possibly a manufacturer's identification or technical specification.







MERCURY
E-805
50W BENSUET
TRANSULATOR
15213



OLLER



11



CONTAINS NO MERCURY

43 21376213





DWW and plumbing





9:15 - 10:00 AM

**Inspect the electrical
panel and structure.**

electrical panel



WARNING
This equipment is designed to be used only with the specified power source and wiring. Do not connect to any other power source or wiring. Failure to follow these instructions may result in fire, explosion, or personal injury.

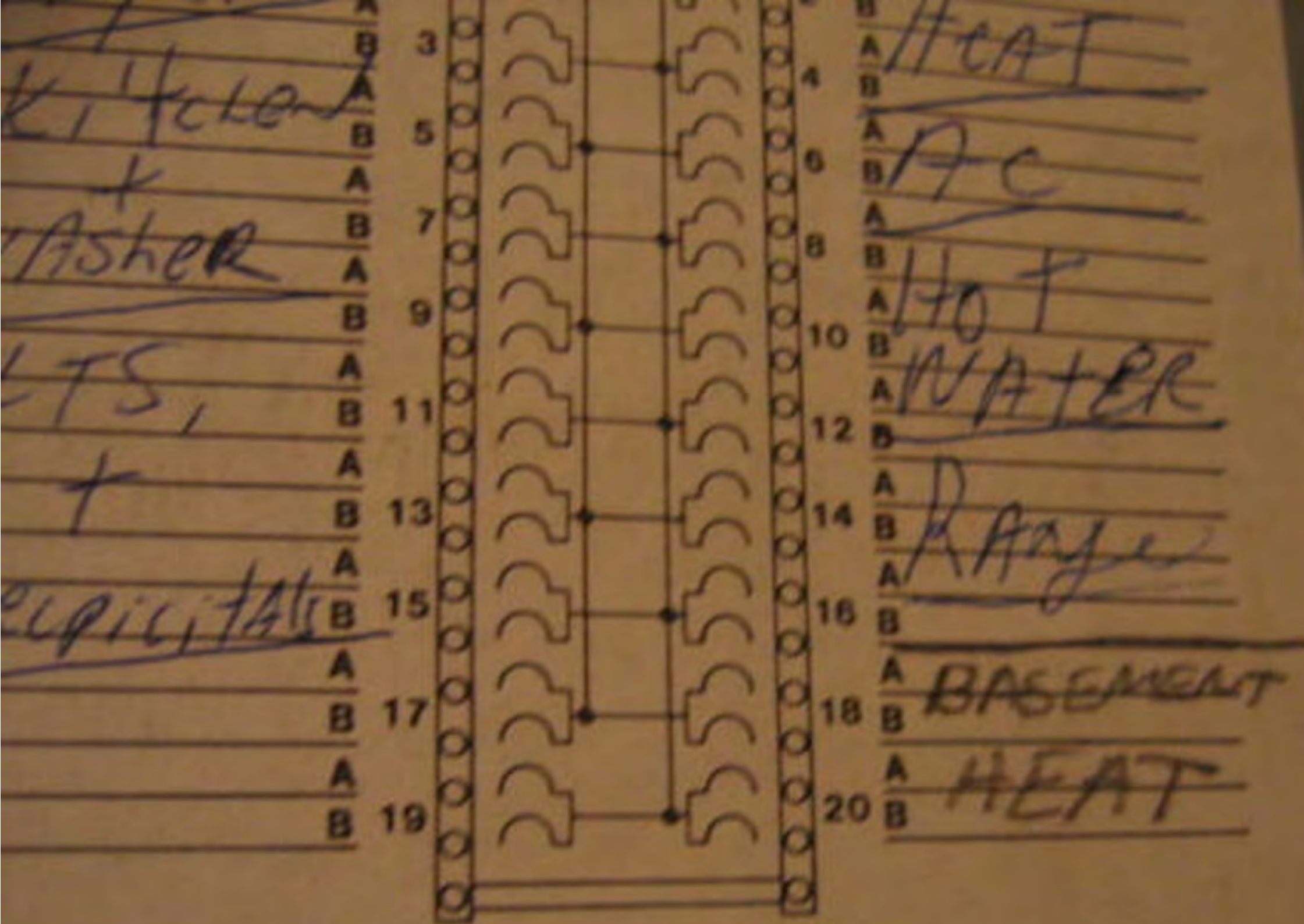
CAUTION
Do not touch the terminals or wiring inside the enclosure. The equipment is energized and may cause electric shock or fire.

SAFETY
Always use proper safety procedures when working on electrical equipment. Wear eye protection and avoid contact with live parts.

DANGER
⚡
High Voltage
Do not touch terminals or wiring
inside enclosure when power is
applied.



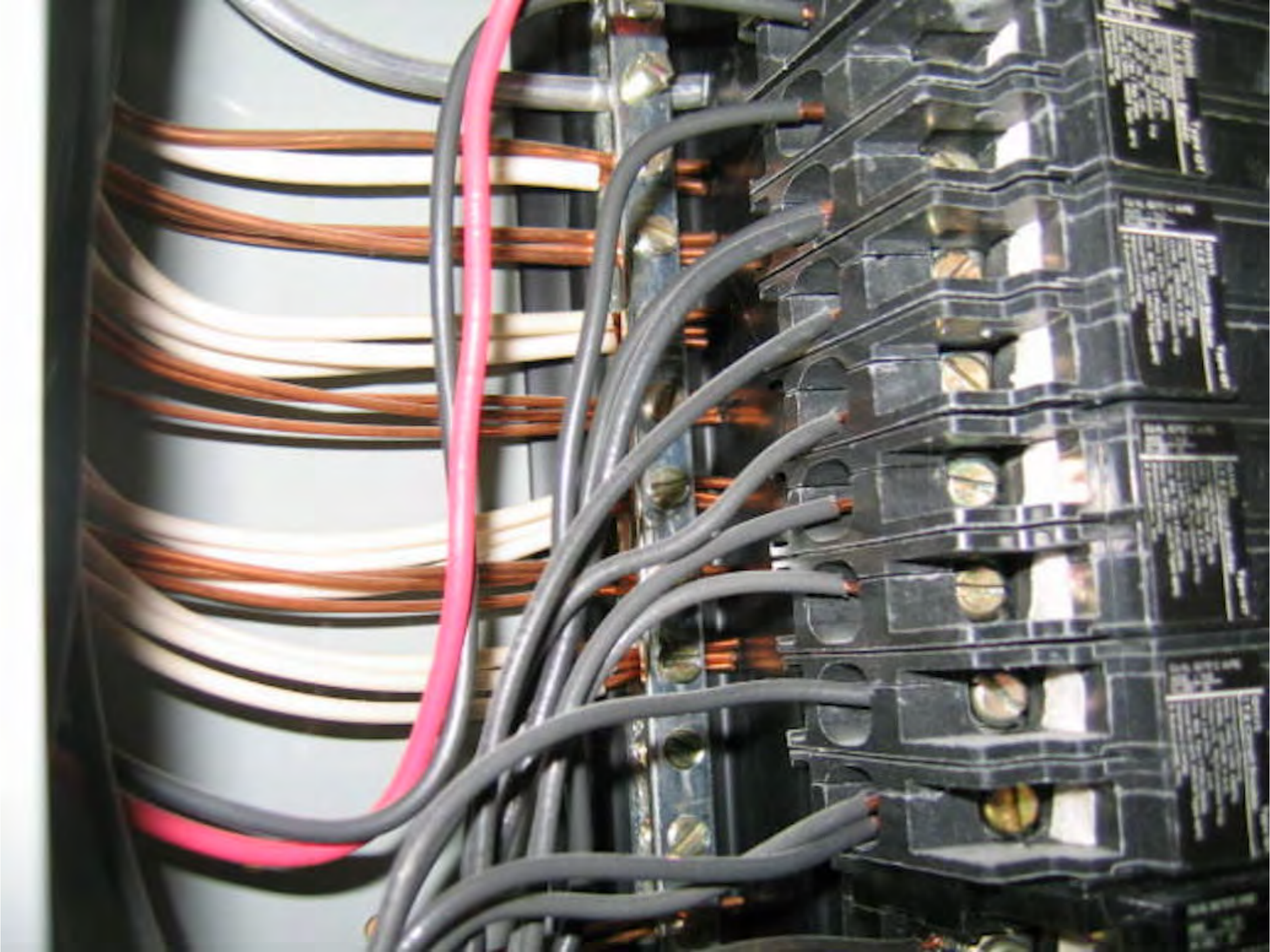


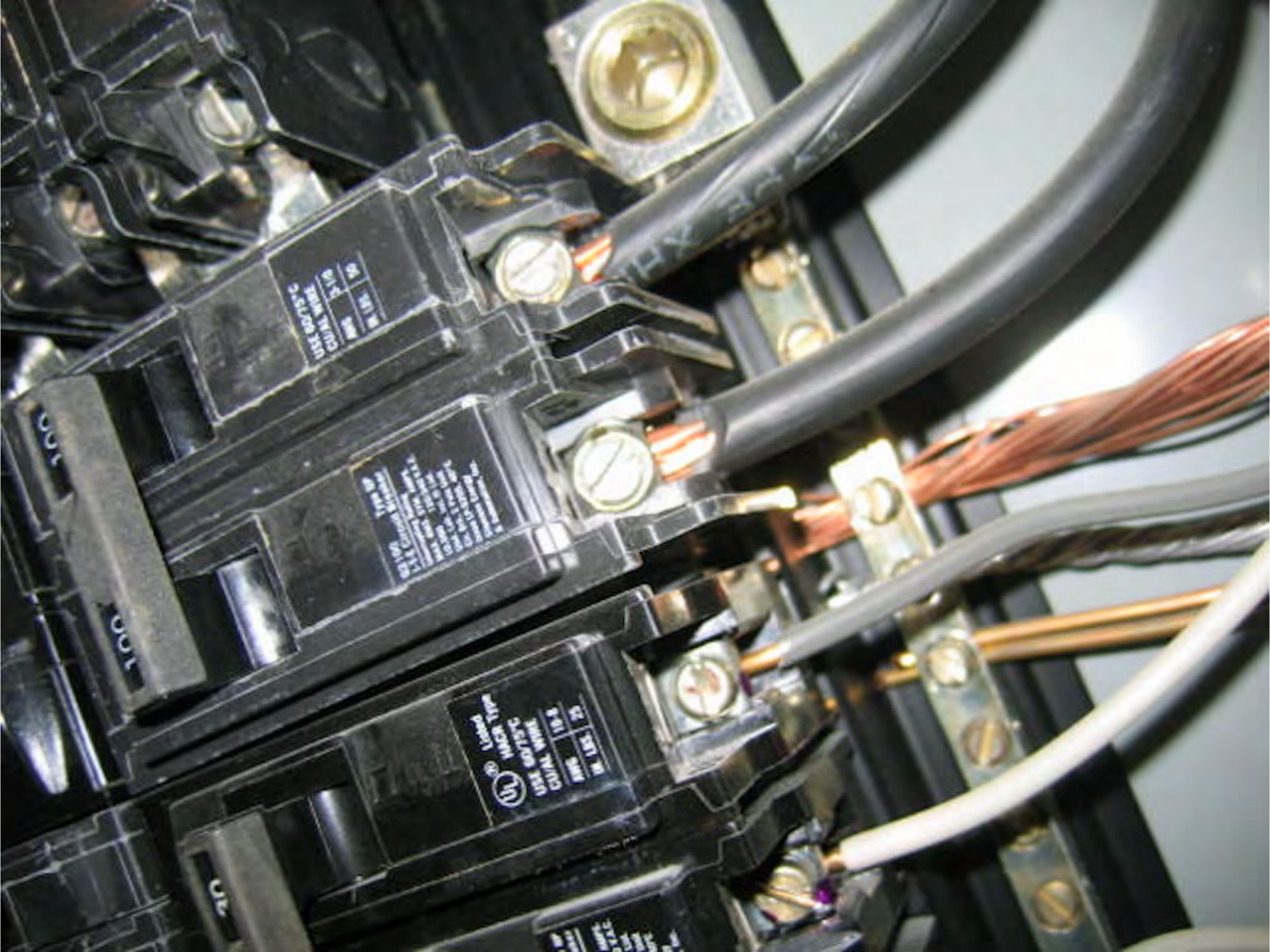


Short Circuit Current Rating

Panelboard has a maximum short circuit current rating of 65,000 RMS symmetrical amperes, AC. The actual rating is dependent on the branch breakers installed in this panelboard. The correct main feeder breaker, if any, installed ahead of this panelboard. The correct main breaker/panelboard main breaker/branch breaker series combinations to be used are tabulated below. Any circuit breaker installed, replaced, or added in this panelboard must be of the correct type as indicated in the tabulation below.





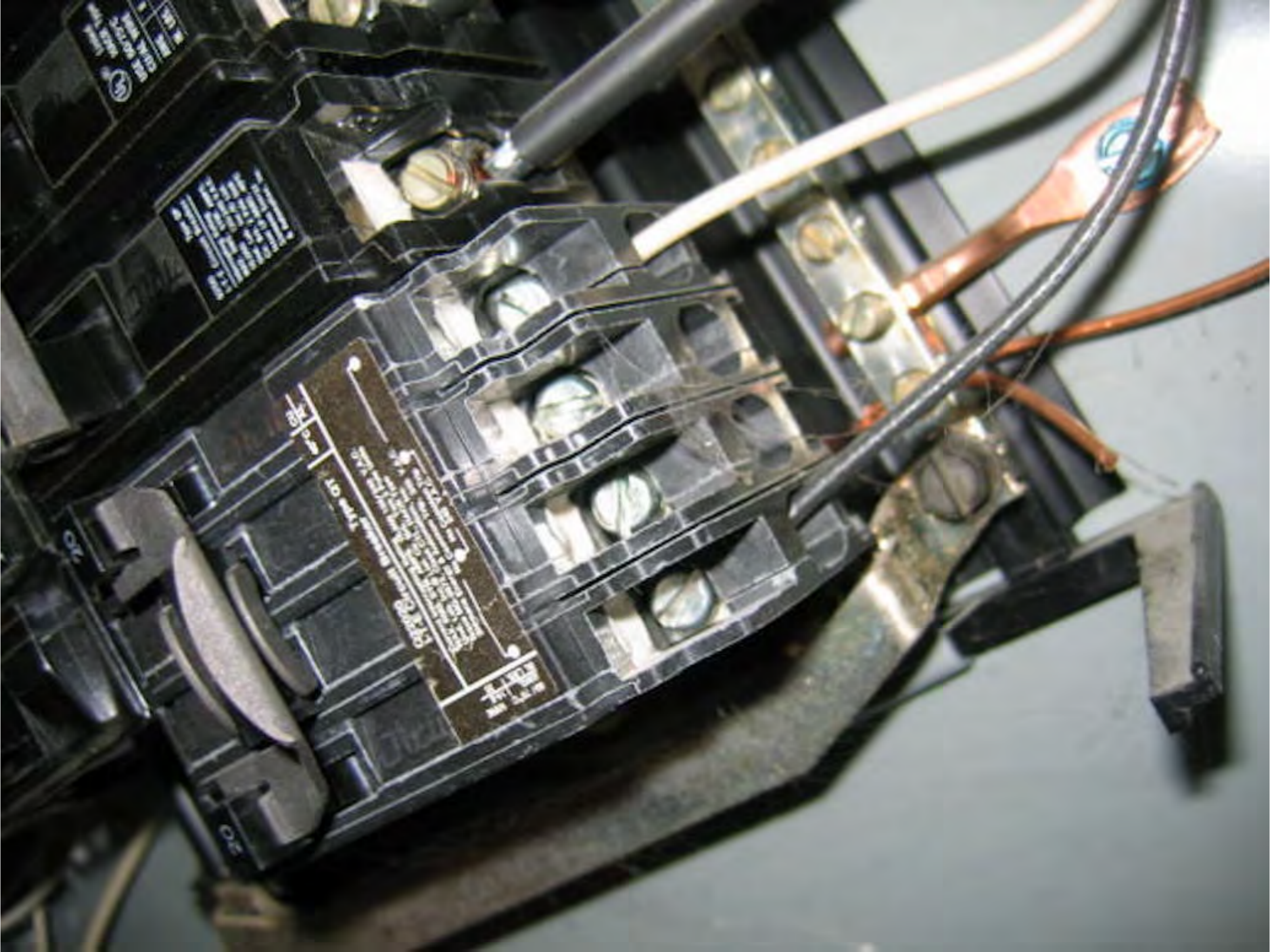


UL
Type QP
CU/AL
100A
125
150

UL
Type QP
CU/AL
100A
125
150

UL
Listed
HACR Type
UL 60755C
CU/AL
100A
125
150

UL
Listed
HACR Type
UL 60755C
CU/AL
100A
125
150



10-1000-1000
10-1000-1000
10-1000-1000
10-1000-1000
10-1000-1000
10-1000-1000
10-1000-1000
10-1000-1000
10-1000-1000
10-1000-1000

10-1000-1000
10-1000-1000
10-1000-1000
10-1000-1000
10-1000-1000
10-1000-1000
10-1000-1000
10-1000-1000
10-1000-1000
10-1000-1000

10

10













The background features a series of overlapping, curved bands in shades of blue and grey, creating a dynamic, flowing effect. The word "structure" is centered in a bold, black, sans-serif font.

structure











VET 2 CHARLOTTE PI









Manville

gold fiber glass
building insulation
save energy
enjoy comfort

Manville



White paper with illegible text, possibly a receipt or label, attached to the left side of the shelf.

Partial text on a cardboard box: "c" and "e" in a red-bordered box.

Stack of blue fabric items, possibly towels or blankets, with a clear glass object (possibly a candle holder) on top.

Large white bucket with a black lid.

Black thermal pitcher.

Box labeled "12-30 Cup Party Peek".

Box of Domino sugar. Visible text includes "Domino SUGAR" and "PURE WHITE GRANULATED SUGAR".







100% Pine

100% Pine

























www.InspectorCoach.com























10:00 - 10:15 AM
Inspect the Attic.



































laundry





Fresh 'n Soft





SPEEDS

DELICATE

NORMAL

HANDWASH / LIGHTS

HEAVY DUTY

ULTRA CLEAN

PREWASH

SOAK

PERMANENT PRESS 1



WATER TEMPERATURE

RINSE OPTIONS

SPEEDS

WATER TEMPERATURE
COLD COLD
WARM WARM
WARM COLD
COLD COLD

ONE RINSE
2ND RINSE

DELICATE SLOW / SLOW
NORMAL SLOW / FAST







10:15 - 10:30 AM
Inspect the Interior.







FRAGRANCE FREE

NEUTROGENA[®]

Body

Moisturizer

Bathing
Bubble Bath